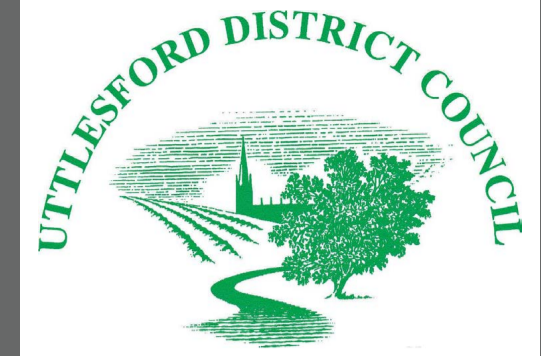


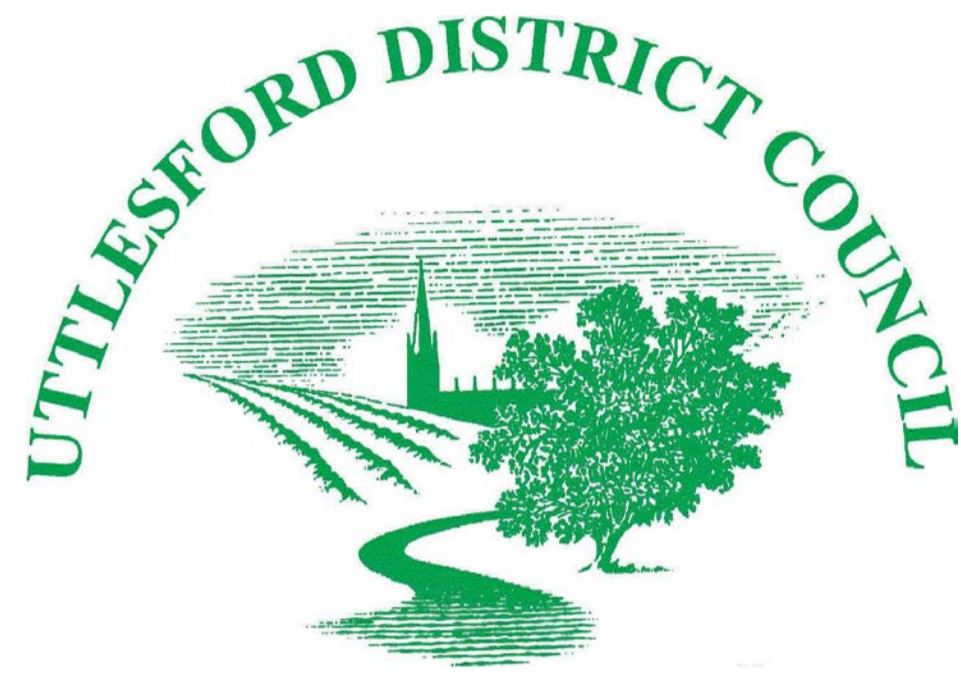
REMODEL OPTION

REYNOLDS COURT
Gaces Acre
Newport
Essex

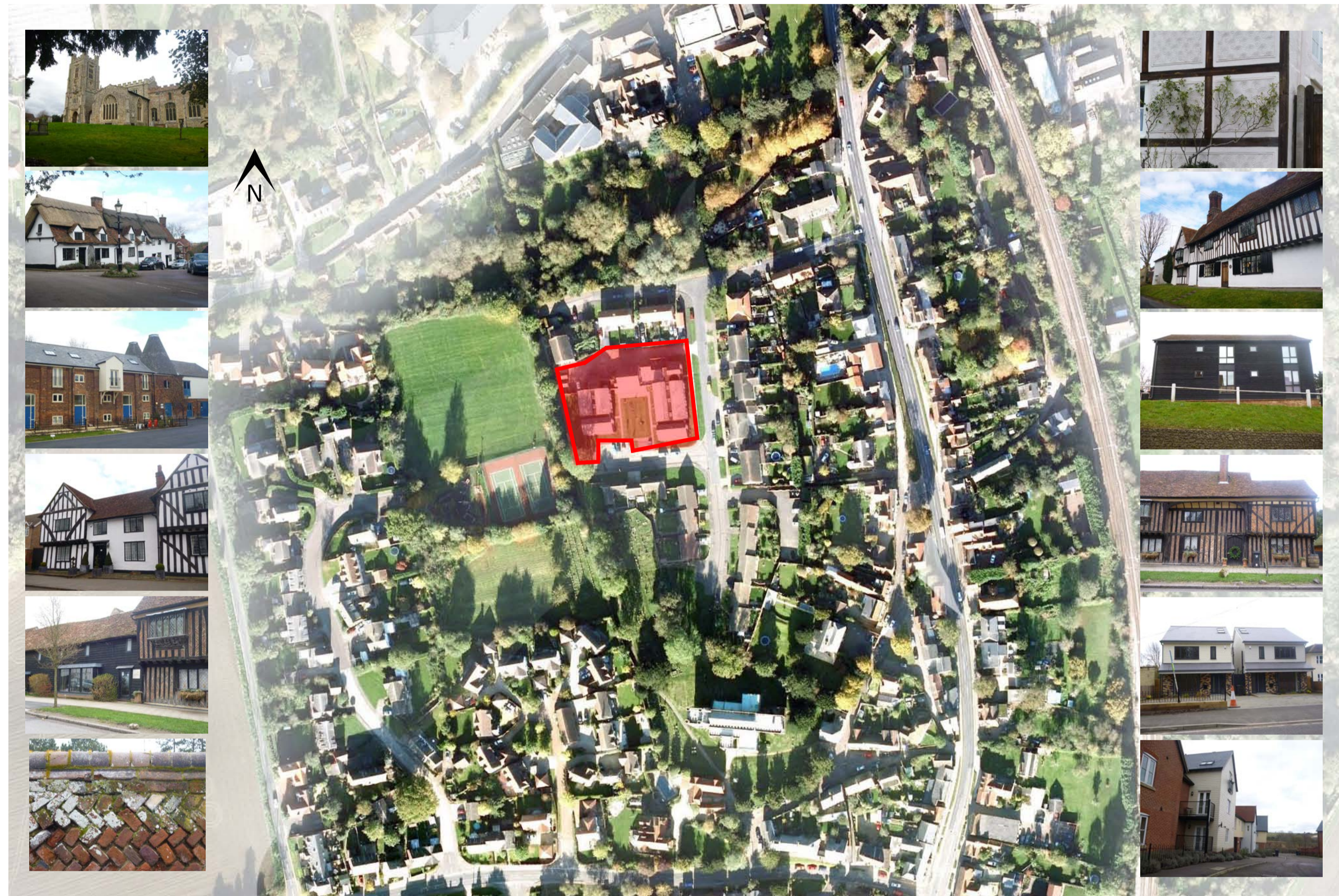


SAUNDERS BOSTON

RESIDENTS CONSULTATION:
15th May 2014
for:



Site Analysis - Local Context



REMODEL OPTION

REYNOLDS COURT
Gages Acre
Newport
Essex



Existing Ground Floor Plan

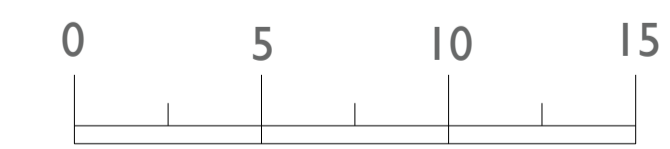


Ground Floor Plan - Remodel



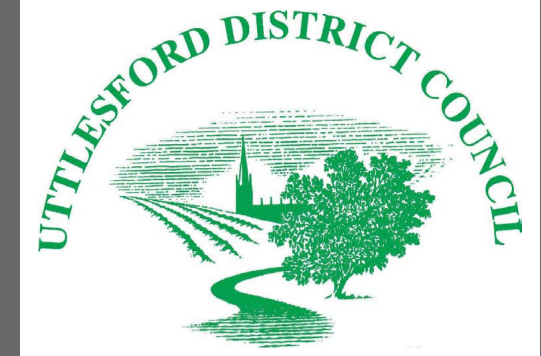
--- New Element
 Figures based on 1 resident to 1 bedroom flat and 2 residents to 2 bedroom flat

Schedule of Accommodation					
	Existing Flats	SB Proposed Flats	Key	Existing Residents	Proposed Residents
Small 1 Bed Flat (< 45 sq m)	30	8	 	30	8
Large 1 Bed Flat (45 - 55 sq m)	0	8	 	0	8
2 Bed Flat (> 55 sq m)	0	4	 	0	8
Total	30	20		30	24

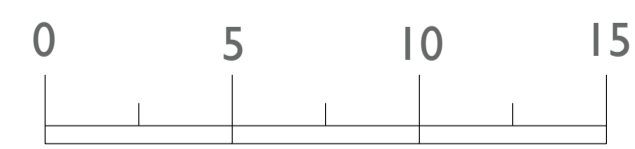
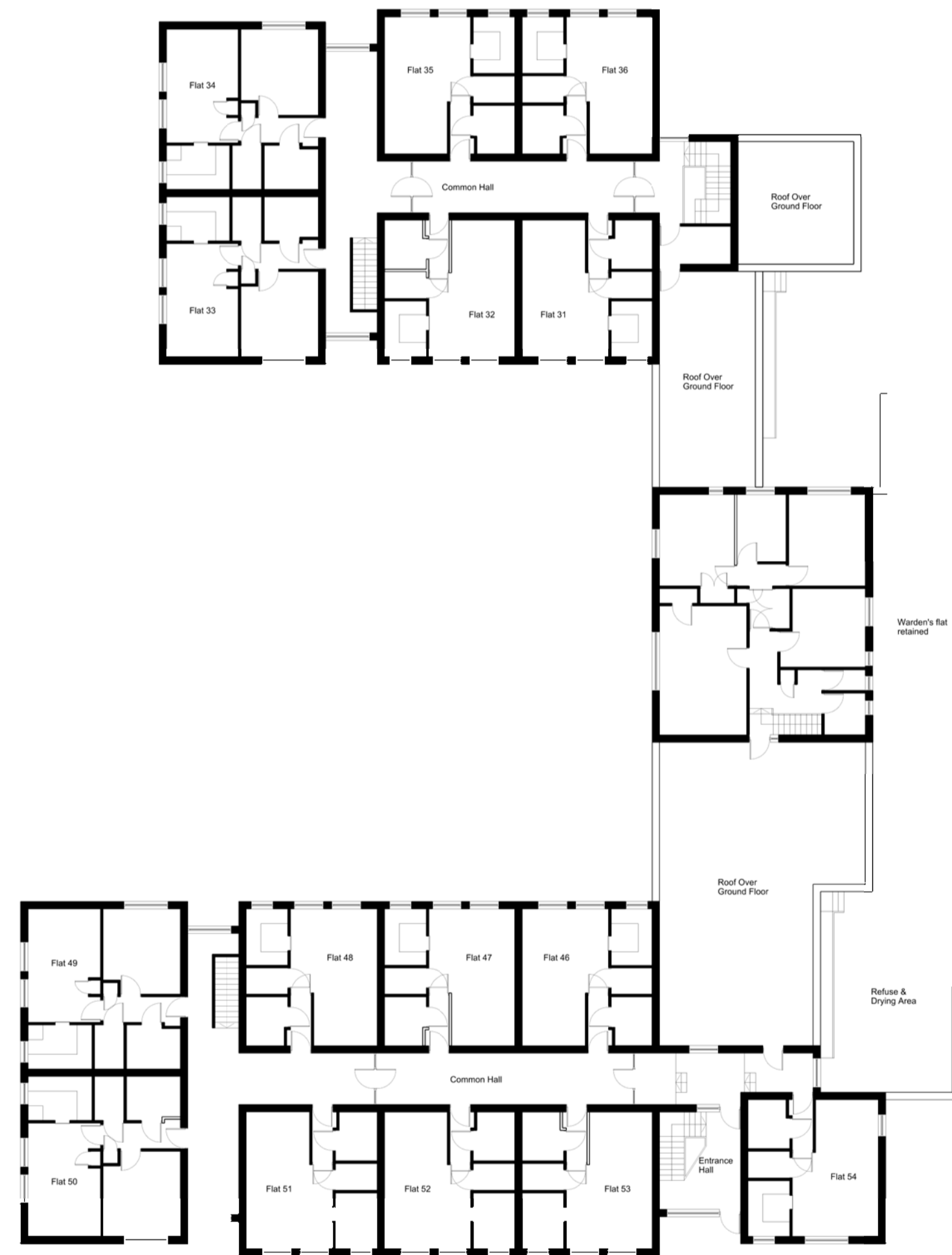


REMODEL OPTION

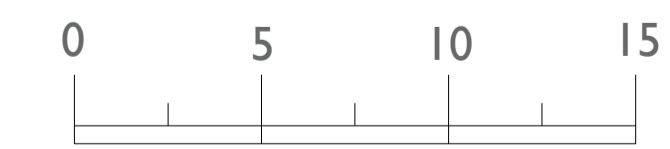
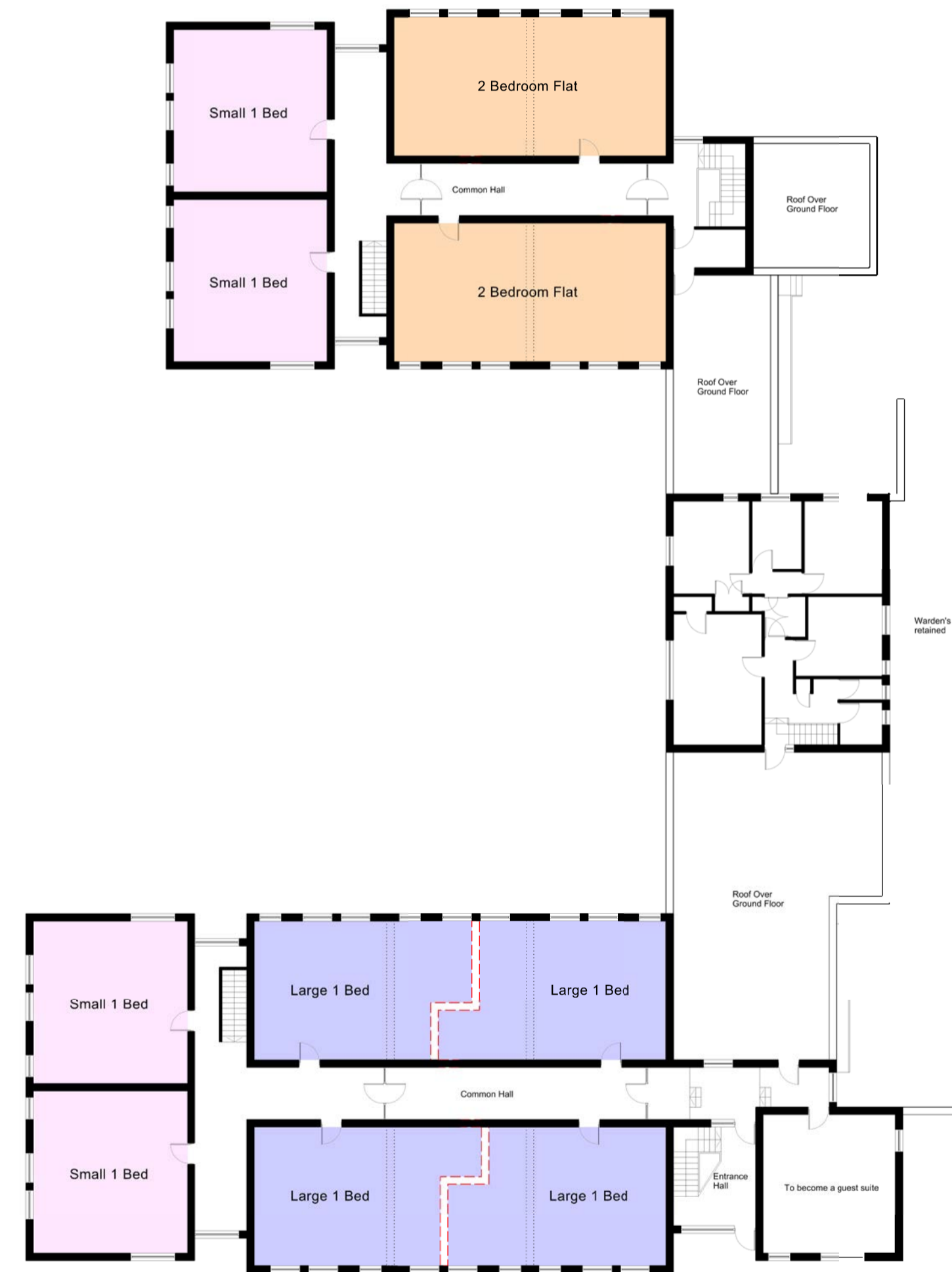
REYNOLDS COURT
Gages Acre
Newport
Essex



Existing First Floor Plan



First Floor Plan - Remodel



--- New Element
Figures based on 1 resident to 1 bedroom flat and 2 residents to 2 bedroom flat

Schedule of Accommodation				
Existing Flats	SB Proposed Flats	Key	Existing Residents	Proposed Residents
30	8	Small 1 Bed Flat (< 45 sq m)	30	8
0	8	Large 1 Bed Flat (45 - 55 sq m)	0	8
0	4	2 Bed Flat (> 56 sq m)	0	8
Total	20		30	24

REMODEL OPTION

Typical Refurbished 2 Bedroom Flat

Area - 61 sq m



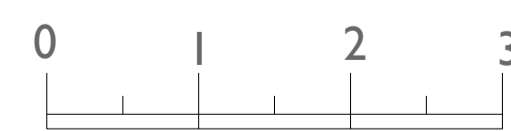
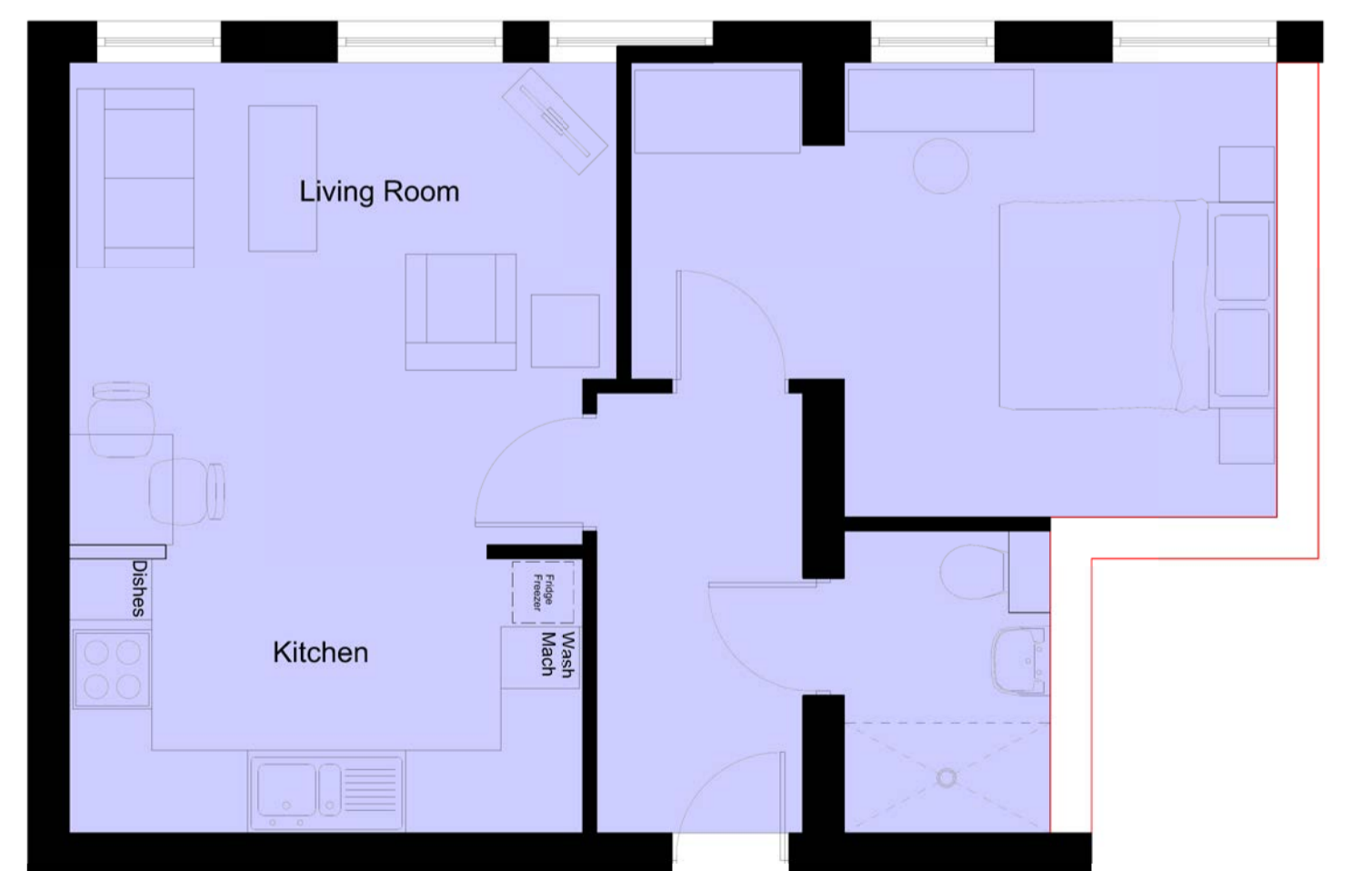
Typical Refurbished Small 1 Bedroom Flat

Area - 40.5 sq m



Typical Refurbished Large 1 Bedroom Flat

Area - 45 sq m



— New Element

